

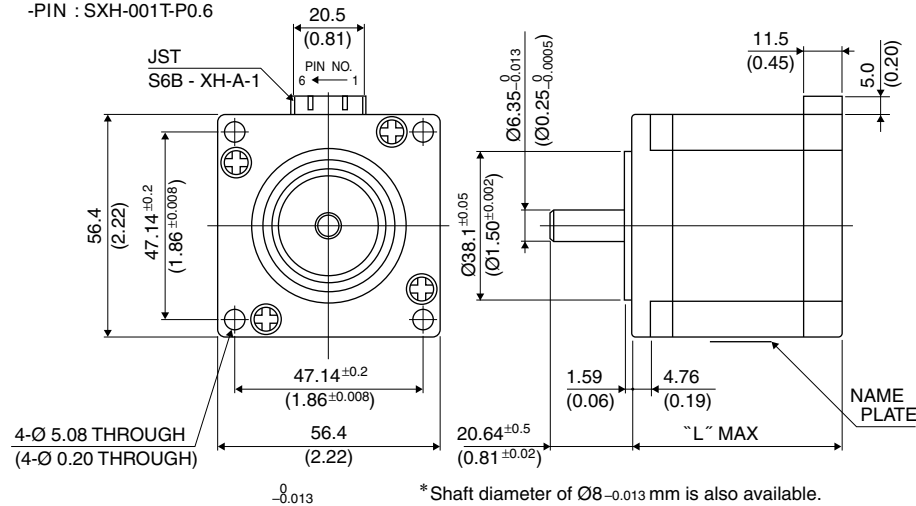
56□ 1.8°

23KM-K

1.8°

Outline

- LEAD WIRE SIDE
- HSG: XHP-6
- PIN : SXH-001T-P0.6



Hybrid

UNIT: mm
(inch)

PIN NO. vs. PHASE

(PHASE)	A	A COM	\bar{A}	B	B COM	\bar{B}
(PIN NO.)	1	2	3	4	5	6

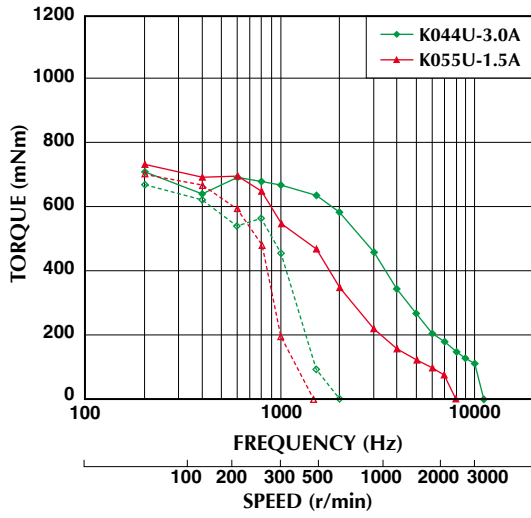
	"L"
23KM-K2**	42 (1.65)
23KM-K3**	50 (1.97)
23KM-K0**	54 (2.13)
23KM-K1**	66 (2.60)
23KM-K7**	76 (2.99)

Specifications

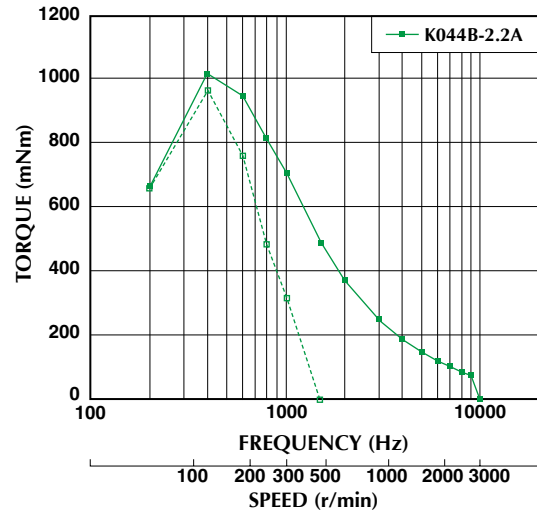
Model	Step Angle (deg)	Drive Sequence	Rated Current (A)	Resistance (Ohms)	Holding Torque (mNm)	Inductance (mH)	Rotor Inertia (g·cm ²)	Detent Torque (mNm)	Mass (g)
23KM-K044U	1.8	UNI-POLAR	3.0	0.85	760	1.8	200	34	680
23KM-K055U	1.8	UNI-POLAR	1.5	3.3	760	6.7	200	34	680
23KM-K144U	1.8	UNI-POLAR	3.0	1.0	1050	2.2	290	49	900
23KM-K155U	1.8	UNI-POLAR	1.5	3.9	1050	8.0	290	49	900
23KM-K249U	1.8	UNI-POLAR	2.0	1.3	420	1.9	120	20	470
23KM-K255U	1.8	UNI-POLAR	1.5	2.3	420	3.6	120	20	470
23KM-K349U	1.8	UNI-POLAR	2.0	1.5	650	2.9	180	29	590
23KM-K355U	1.8	UNI-POLAR	1.5	2.9	650	5.5	180	29	590
23KM-K744U	1.8	UNI-POLAR	3.0	1.15	1200	2.7	360	50	1050
23KM-K755U	1.8	UNI-POLAR	1.5	4.6	1200	10.2	360	50	1050
23KM-K044B	1.8	BI-POLAR	2.2	1.7	1000	7.2	200	34	680
23KM-K144B	1.8	BI-POLAR	2.1	2.0	1250	8.7	290	49	900
23KM-K249B	1.8	BI-POLAR	1.4	2.4	540	7.7	120	20	470
23KM-K349B	1.8	BI-POLAR	1.4	3.0	800	11.8	180	29	590
23KM-K744B	1.8	BI-POLAR	2.0	2.3	1500	10.6	360	50	1050

Torque/Speed Characteristics

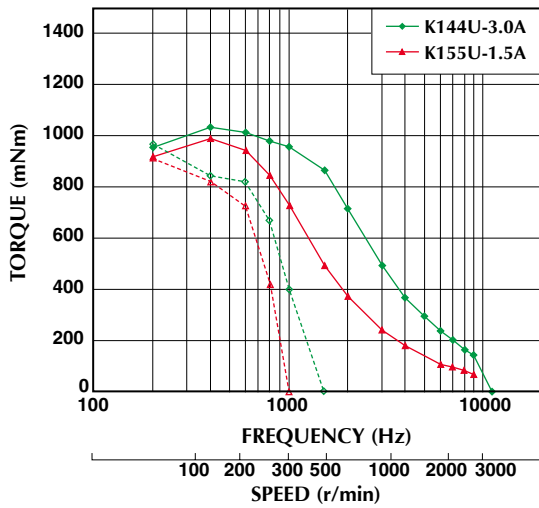
Model No: 23KM-K044U,K055U
 Driver: Chopper Dual
 Supply Voltage: 24.0 (Volt)



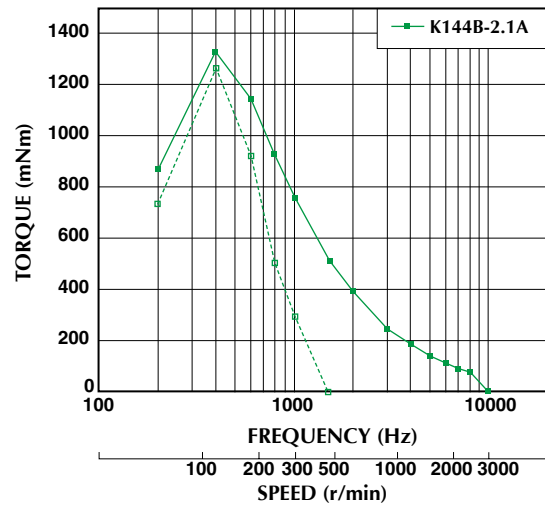
Model No: 23KM-K044B
 Driver: Chopper Dual
 Supply Voltage: 24.0 (Volt)



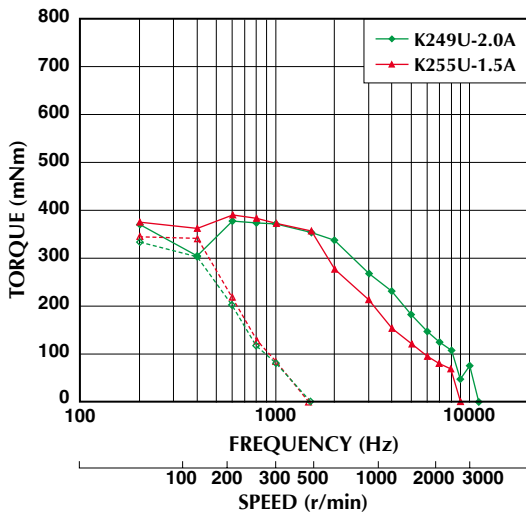
Model No: 23KM-K144U,K155U
 Driver: Chopper Dual
 Supply Voltage: 24.0 (Volt)



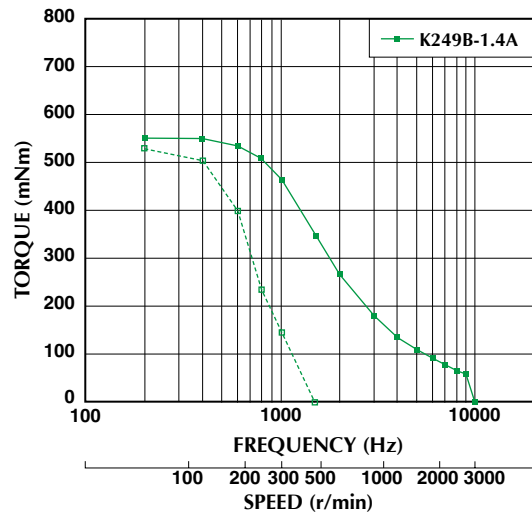
Model No: 23KM-K144B
 Driver: Chopper Dual
 Supply Voltage: 24.0 (Volt)



Model No: 23KM-K249U,K255U
 Driver: Chopper Dual
 Supply Voltage: 24.0 (Volt)



Model No: 23KM-K249B
 Driver: Chopper Dual
 Supply Voltage: 24.0 (Volt)

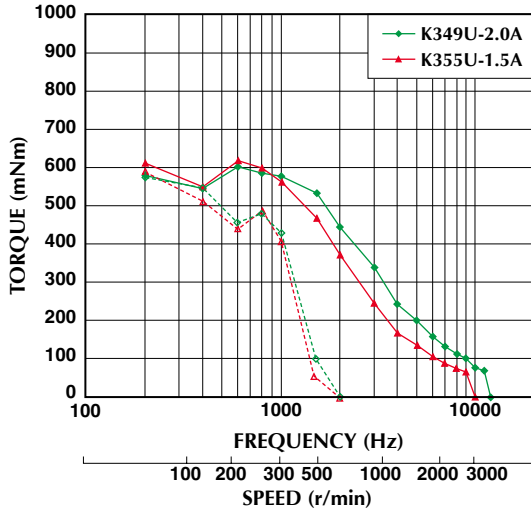


— : PULL OUT
 - - - : PULL IN

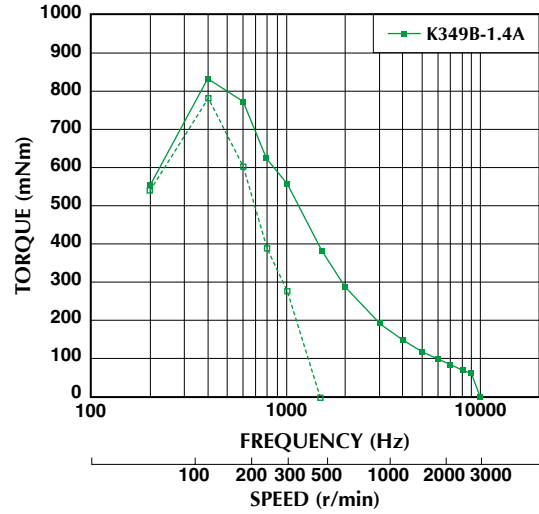
Torque/Speed characteristics are for reference only and it may change when operated at different drive conditions.

■ トルク・スピード特性 Torque/Speed Characteristics

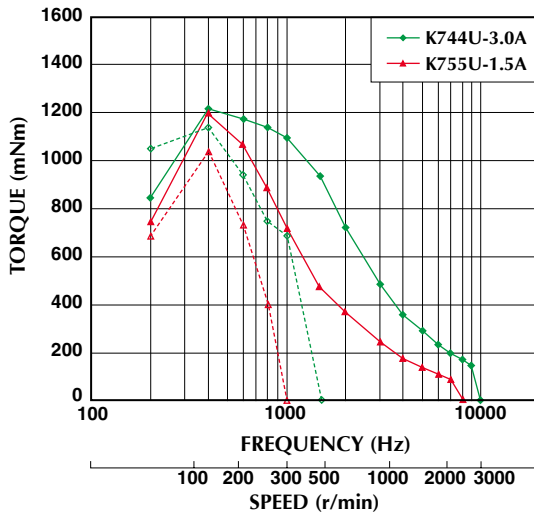
Model No: 23KM-K349U,K355U
 Driver: Chopper Dual
 Supply Voltage: 24.0 (Volt)



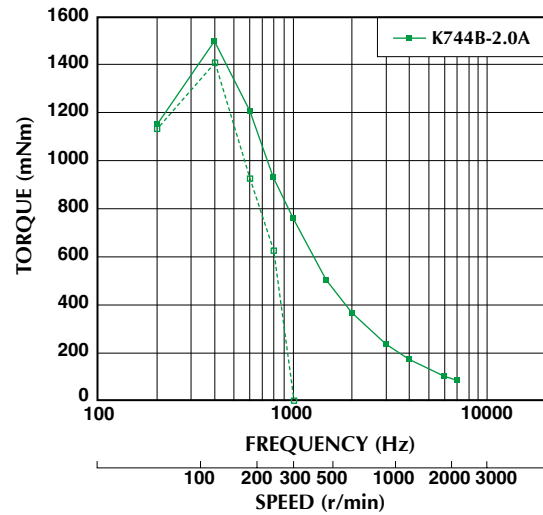
Model No: 23KM-K349B
 Driver: Chopper Dual
 Supply Voltage: 24.0 (Volt)



Model No: 23KM-K744U,K755U
 Driver: Chopper Dual
 Supply Voltage: 24.0 (Volt)



Model No: 23KM-K744B
 Driver: Chopper Dual
 Supply Voltage: 24.0 (Volt)



— : PULL OUT
 - - - : PULL IN

■ Torque/Speed characteristics are for reference only and it may change when operated at different drive conditions.